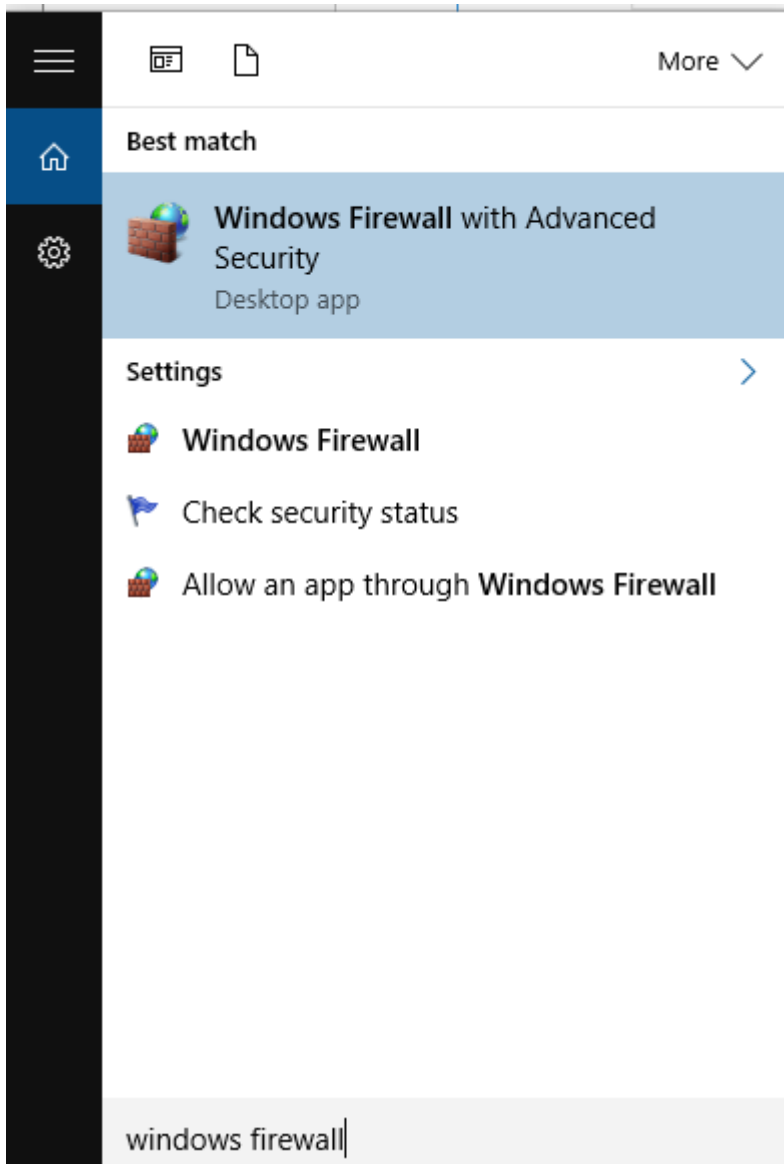
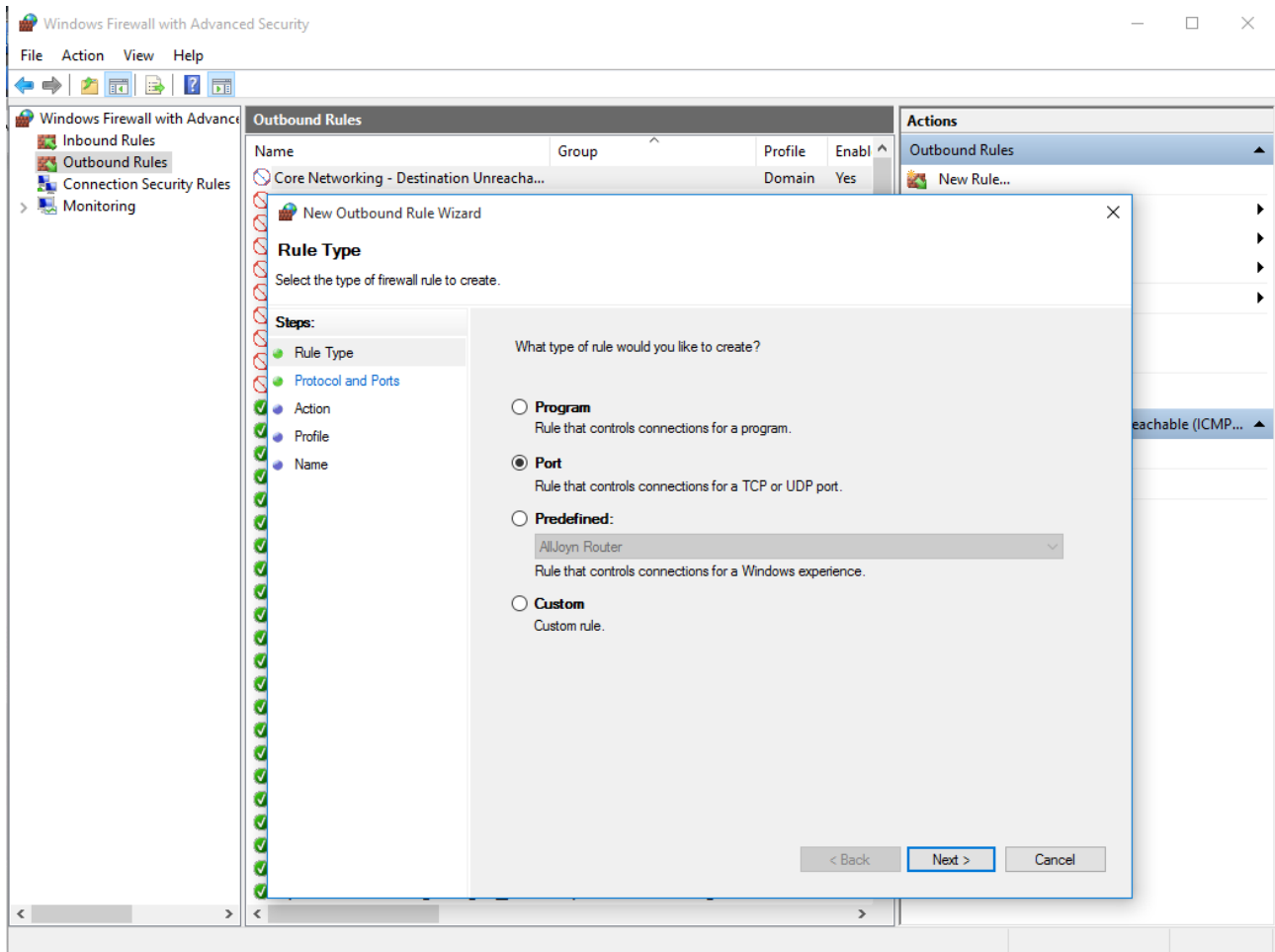


VISMA ON PREMISES GATEWAY

TCP 10061 Error: No connection could be made because the target machine actively refused – virheilmoituksen korjaaminen.



Kirjoita Windowsin hakukenttään **Windows Firewall** ja valitse hakutuloksista **'Windows Firewall with advanced security'**



Valitse **Outbound Rules** ja **New Rule...** Avautuvassa ikkunassa valitse **Port** ja paina **Next**.

New Outbound Rule Wizard

Protocol and Ports

Specify the protocols and ports to which this rule applies.

Steps:

- Rule Type
- Protocol and Ports
- Action
- Profile
- Name

Does this rule apply to TCP or UDP?

TCP
 UDP

Does this rule apply to all remote ports or specific remote ports?

All remote ports
 Specific remote ports:

Example: 80, 443, 5000-5010

< Back Next > Cancel

Syötä portti kenttään 5555 ja paina **Next**.

Action

Specify the action to be taken when a connection matches the conditions specified in the rule.

Steps:

- Rule Type
- Protocol and Ports
- **Action**
- Profile
- Name

What action should be taken when a connection matches the specified conditions?

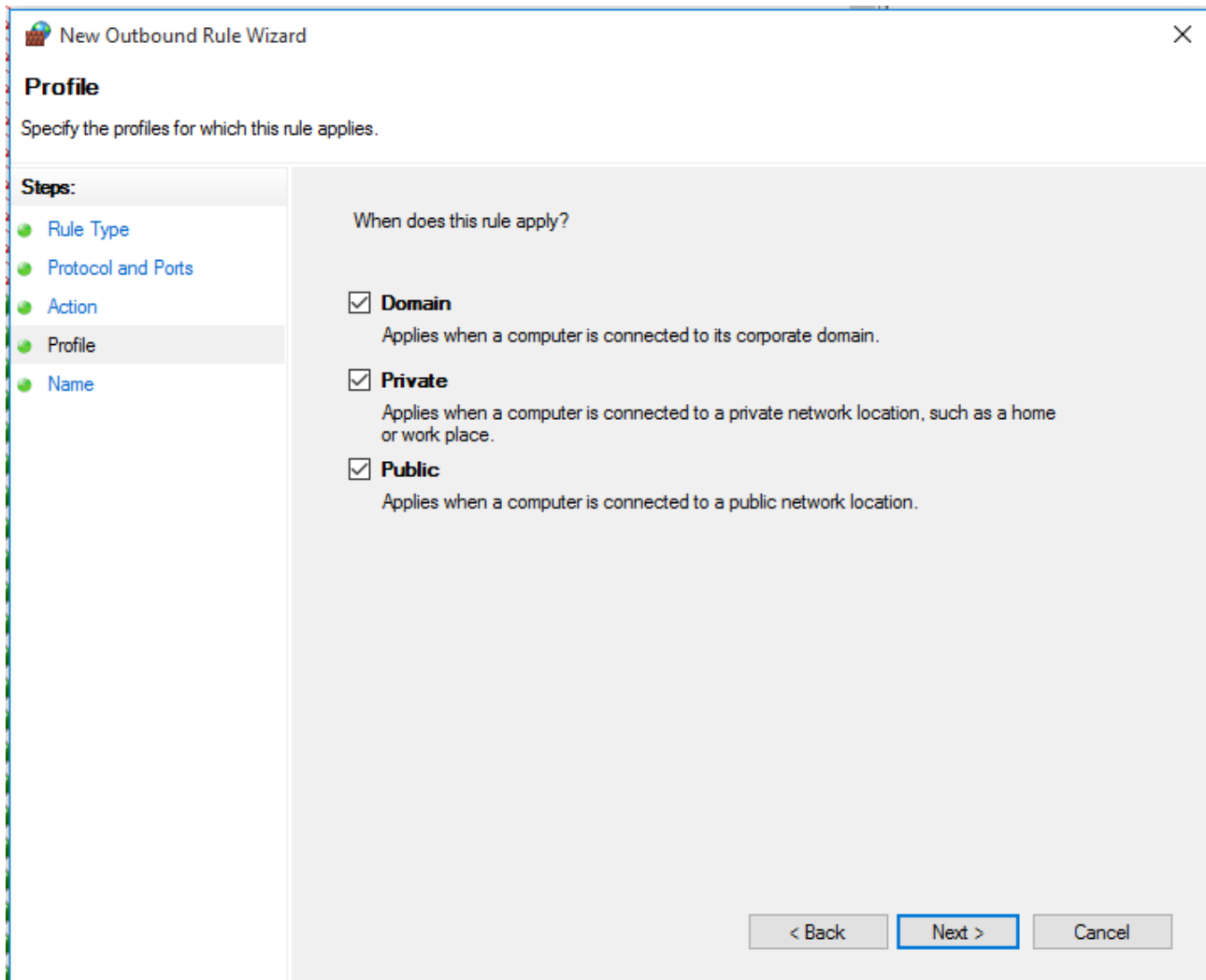
Allow the connection
This includes connections that are protected with IPsec as well as those are not.

Allow the connection if it is secure
This includes only connections that have been authenticated by using IPsec. Connections will be secured using the settings in IPsec properties and rules in the Connection Security Rule node.

Block the connection

< Back **Next >** Cancel

Valitse **'Allow the connection'** ja paina **Next**.



Paina Next.

New Outbound Rule Wizard

Name

Specify the name and description of this rule.

Steps:

- Rule Type
- Protocol and Ports
- Action
- Profile
- Name

Name:

Description (optional):

< Back Finish Cancel

Keksi sopiva nimi ja kuvaus säännölle jotta tunnistat sen jatkossa ja voit tarvittaessa tehdä siihen muutoksia.

Tee nyt sama myös **Inbound rule**- kohtaan.

Tämän jälkeen muunnospalvelun pitäisi toimia normaalisti myös työasemilta.